

Port State Measures

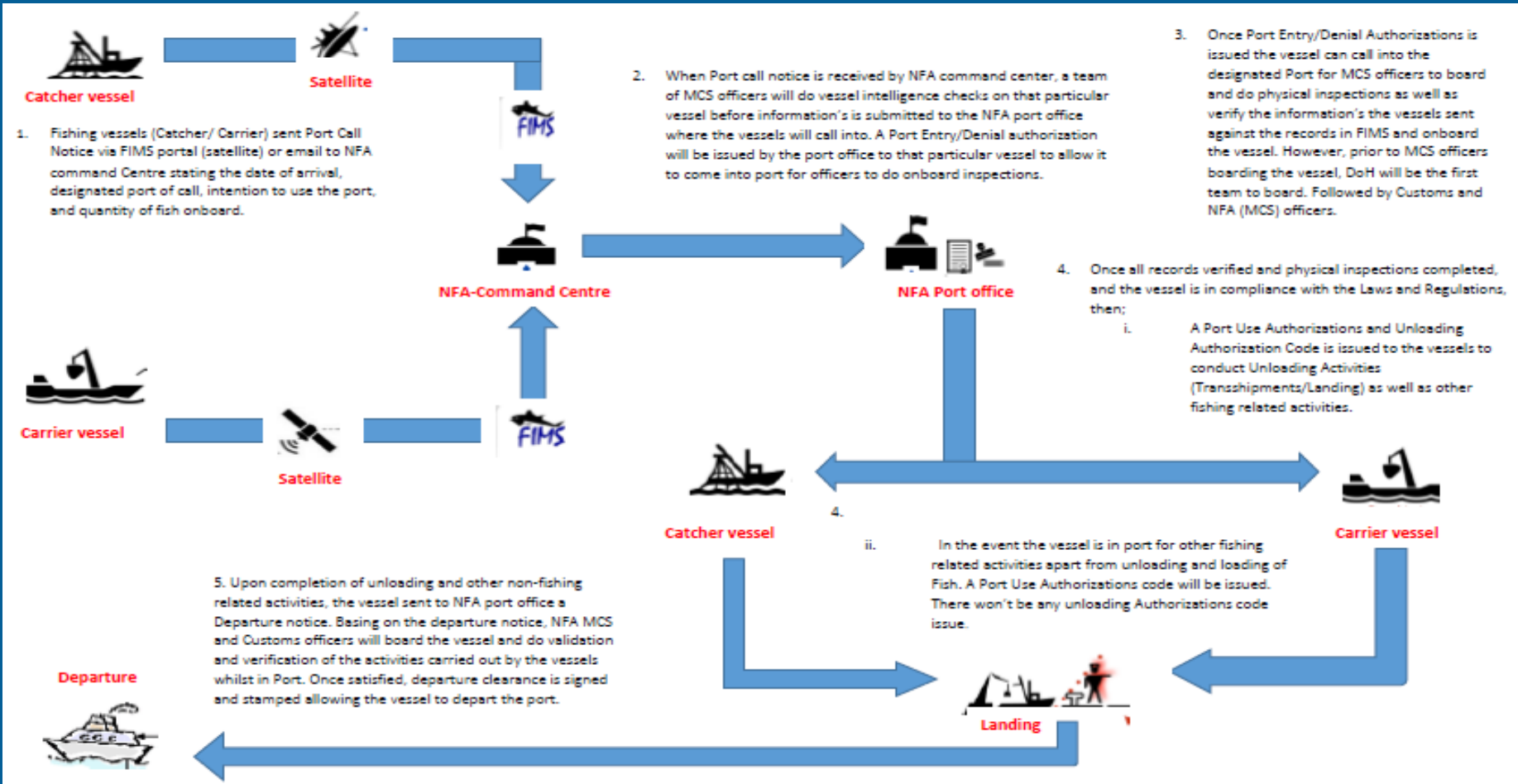
Implementation Updates

Loloata Resort
28-30 June, 2021



NATIONAL FISHERIES AUTHORITY

PSM Schematic



NATIONAL FISHERIES AUTHORITY

Overall Implementation

- **Common Centre (VMS) - central nerves system**
 - **Monitoring of vessels**
 - **Analysis & Risks determination**
- **Operational ports (x4)**
 - **Analyses & Risks determination**
 - **Port entry authorization**
 - **Boarding & Inspection**
 - **Unloading/port use authorization**
 - **Departure clearance**



NATIONAL FISHERIES AUTHORITY

2020 update

- Fishing vessel port entry & exit

Port	Domestic	LBF	Bilateral	Total	Ave/month
Rabaul	28	287	326	641	53
Lae	81	100	10	191	15
Madang	10	66	3	79	6
Wewak	-	47	12	59	5
	119	500	350	970	77

- Total of 970 vessels enteries throughout the ports
- On average of 77 vessels per month



NATIONAL FISHERIES AUTHORITY

Highlights

- **Review & Development of PSM SOP**
 - **Draft Standard Operating Procedure (SOP) completed**
- **e-PSM (FIMS)**
 - **Scoping and development in progress**



Challenges

- **Capacities in Operational Ports**
 - **Internet Access**
 - **Office facilities**
 - **Manpower**
- **Inter-agency (NFA/Customs/NAQIA/DoH)**
 - **Lack of exchange of information & understanding of each function,**
 - **Boarding, inspection & authorization of fishing vessels**
- **Impact of COVID 19 on port operations**



NATIONAL FISHERIES AUTHORITY

Going Forward

- **Internal/external Consultation**
 - **Industry**
 - **Line agencies**
- **Implementation of Draft SOP**
- **Training & Capacity Building**
- **Import capacities in ports**



NATIONAL FISHERIES AUTHORITY

Thank you



NATIONAL FISHERIES AUTHORITY